

# *Coralina*

KAMALA



BEAUTY OF THE OCEAN

# *Coralina*

KAMALA



BEAUTY OF THE OCEAN





BEAUTY OF THE OCEAN



# PHUKET MAP

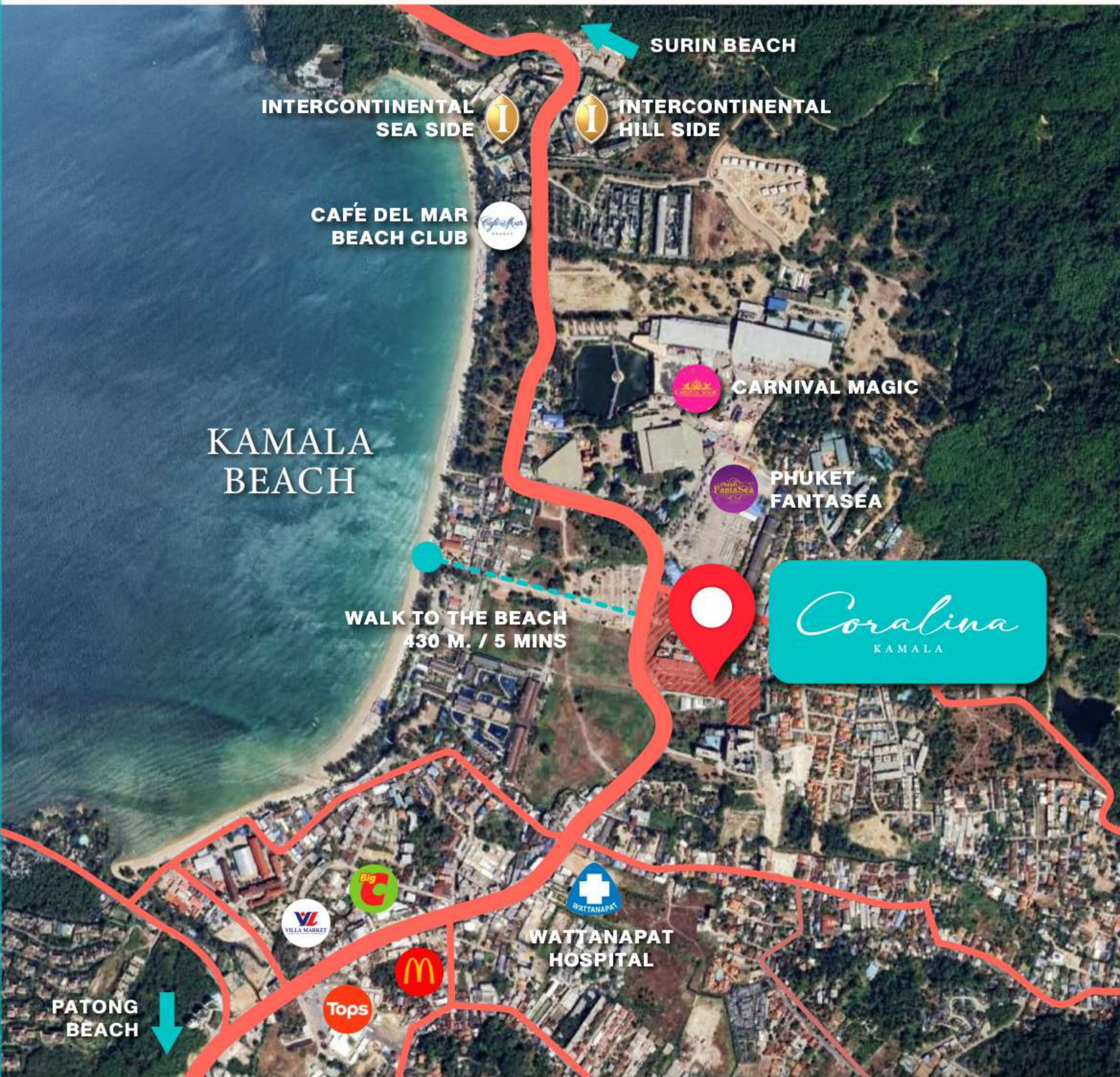


# LOCATION MAP



- 300 m.  To Sunwing / Sunprime Kamala Beach
- 450 m.  To Wattanapat Hospital
- 500 m.  To Phuket FantaSea
- 1.0 km.  To Big C
- 1.0 km.  To McDonald's
- 1.1 km.  To Tops
- 1.2 km.  To Cafe' del Mar
- 1.2 km.  To Villa Market
- 1.4 km.  To InterCon Hotel
- 2.5 km.  To Hyatt Regency Phuket Resort

# MAP



**THE OCEAN REVEALS  
ITS TIMELESS BEAUTY IN EVERY RIPPLE.**

A sanctuary where elegance meets serenity,  
Inviting you to live beautifully by the sea.



## THE HIDDEN GEM

Live to the rhythm of the waves and the romance of the sea. Coralina Kamala surrounds you with boutique beach clubs, curated experiences, and nature's quiet charm designed for elegant escapes and lasting memories.

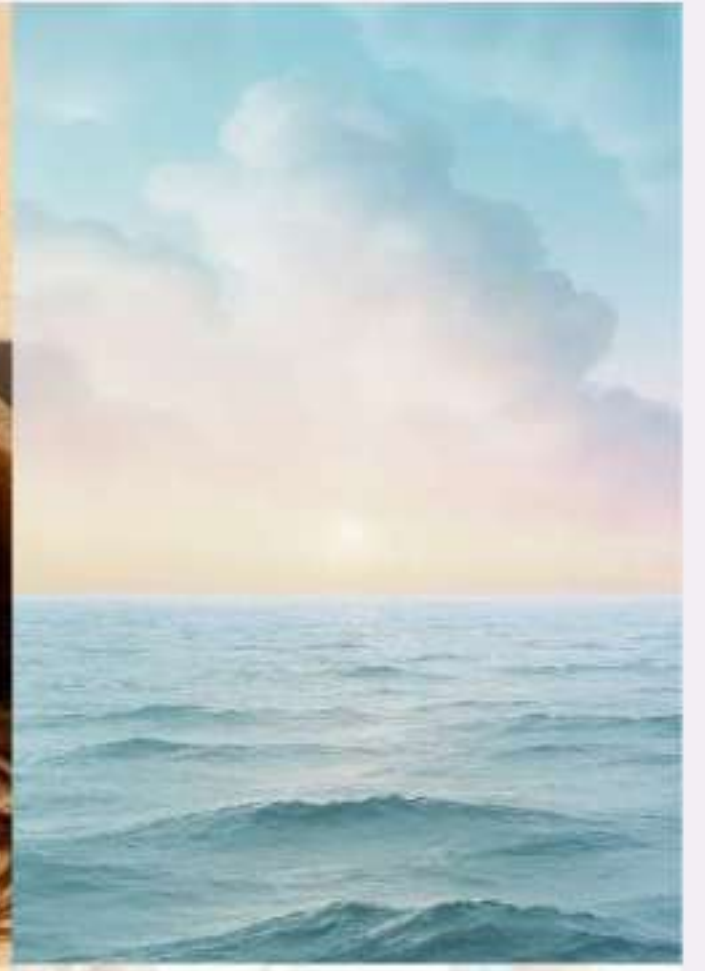




## SPACES CRAFTED FOR BEAUTY, BALANCE, AND BELONGING

Every detail at Coralina Kamala is thoughtfully designed to create harmony between aesthetics, comfort, and community.

From serene interiors filled with natural light to wellness-inspired facilities and lush green spaces - each corner is crafted to bring you closer to nature, to yourself, and to a sense of true belonging.



CORALINA KAMALA

# INSPIRE *You*

TO FINALLY LIVE  
IN PHUKET



# CONCEPT *Design*

## ARCHITECTURAL DESIGN

A soft modern touch with natural tones and flowing lines reflects the calm elegance of Kamala's



## INTERIOR DESIGN

Interiors blend softness and sophistication, with wide balconies and open layouts filled with natural light—ideal for long stays and restful living.



## LANDSCAPE DESIGN

A layered tropical garden connects every space with serenity. From barefoot paths to rooftop pools, every detail is crafted for mindful living.



# 4 KEY PILLARS

## OF SUSTAINABLE DESIGN



### ECO - FRIENDLY

**2,900 SQ.M. GREEN SPACE** : REDUCE HEAT & REFRESH AIR QUALITY  
**COOLING & VENTILATION** : NATURAL AIRFLOW+LIGHT COLORS SAVE ENERGY  
**PET-FRIENDLY ZONES** : GREEN AREAS & SPACES FOR PETS  
**ROOFTOP LEISURE POOL** : SUNSET VIEW POOL FOR RELAXATION



### SERVICE

**SECURITY & SERVICES** : FULL SAFETY & CONVENIENCE  
**COMMUNITY MALL** : SHOPS & DAILY SERVICES INSIDE PROJECT  
**PET CLUB** : DEDICATED PET ACTIVITY AREAS  
**PRIVATE ACCESS** : GROUND FLOOR UNITS WITH GARDEN & POOL ACCESS



### WELLNESS

**2,500 SQ.M. POOLS** : LAP, LAGOON, KIDS POOL  
**UNIVERSAL DESIGN** : ACCESSIBLE FOR SENIORS & DISABLED  
**RELAXATION ZONES** : ONSEN, FOOT SPA, WELLNESS JACUZZI  
**COMMUNITY WELL-BEING** : SECRET GARDEN, PLAYGROUND, FAMILY AREAS



### TECHNOLOGY FOR LIVING

**SMART LIVING** : ACCESS CONTROL & LIFT CONTROL  
**USB OUTLETS** : AVAILABLE IN EVERY UNIT  
**LANDSCAPE TECH** : AUTO IRRIGATION & SMART LIGHTING  
**ENERGY EFFICIENCY** : ECO-MATERIALS & LED LIGHTING

CORALINA KAMALA

BLENDS NATURE - WELLNESS - SERVICE - SMART TECH FOR A TRULY SUSTAINABLE LIFESTYLE.



*Coralina*  
KAMALA

COMPANY RESERVES THE RIGHT TO AMEND THE TERMS AND CONDITIONS AT ANY TIME WITHOUT PRIOR NOTICE  
THE IMAGES SHOWN ARE COMPUTER GENERATED. ANY CHANGE CAN BE APPLIED WITHOUT NOTICE. ALL RIGHTS RESERVED

# PROJECT INFORMATION

<b>Land Area</b>	Approx. 11-1-27.58 Rais (18,110.35 Sq.m.)		
<b>No. Of Residential Buildings</b>	Low Rise, 7 Storeys, 8 Residential Buildings A & B (Pet-Friendly), C, D, E, F, G, And H		
<b>Facilities &amp; Parking</b>	1 Building		
<b>No. of Residential Units</b>	564 Units		
<b>Shops</b>	Building A, 5 Units		
<b>Car Parking</b>	40% (Inc. Ev 4 Lots, And Handicap 11 Lots)		
<b>Motorbike Parking</b>	38 Lots		
<b>Building Style</b>	Modern Luxury		
<b>Unit Type</b>	1 Bedroom	26 - 44	sq.m.
	1 Bedroom Plus	46 - 49	sq.m.
	2 Bedroom	64 - 68	sq.m.
	2 Bedroom Plus	98 - 107	sq.m.
	2 Bedroom Penthouse	71 - 72	sq.m.
	2 Bedroom Penthouse Plus	91 - 122	sq.m.
	3 Bedroom Penthouse	128	sq.m.



# MASTER PLAN

## 1<sup>ST</sup> FLOOR PLAN



## 2<sup>ND</sup> FLOOR PLAN



- 1 BEDROOM
- 1 BEDROOM PLUS
- 2 BEDROOMS
- 2 BEDROOMS PLUS
- PENTHOUSE

\*COMPANY RESERVES THE RIGHT TO AMEND THE TERMS AND CONDITIONS, AT ANY TIME WITHOUT PRIOR NOTICE.  
 \*THE IMAGES SHOWN ARE COMPUTER GENERATED. ANY CHANGE CAN BE APPLIED WITHOUT NOTICE. ALL RIGHTS RESERVED

# MASTER PLAN

## 3<sup>RD</sup> FLOOR PLAN



## 4<sup>TH</sup> FLOOR PLAN



- 1 BEDROOM
- 1 BEDROOM PLUS
- 2 BEDROOMS
- 2 BEDROOMS PLUS
- PENTHOUSE



\*COMPANY RESERVES THE RIGHT TO AMEND THE TERMS AND CONDITIONS, AT ANY TIME WITHOUT PRIOR NOTICE.  
 \*THE IMAGES SHOWN ARE COMPUTER GENERATED. ANY CHANGE CAN BE APPLIED WITHOUT NOTICE. ALL RIGHTS RESERVED

# MASTER PLAN

## 5<sup>TH</sup> FLOOR PLAN



## 6<sup>TH</sup> FLOOR PLAN



- 1 BEDROOM
- 1 BEDROOM PLUS
- 2 BEDROOMS
- 2 BEDROOMS PLUS
- PENTHOUSE

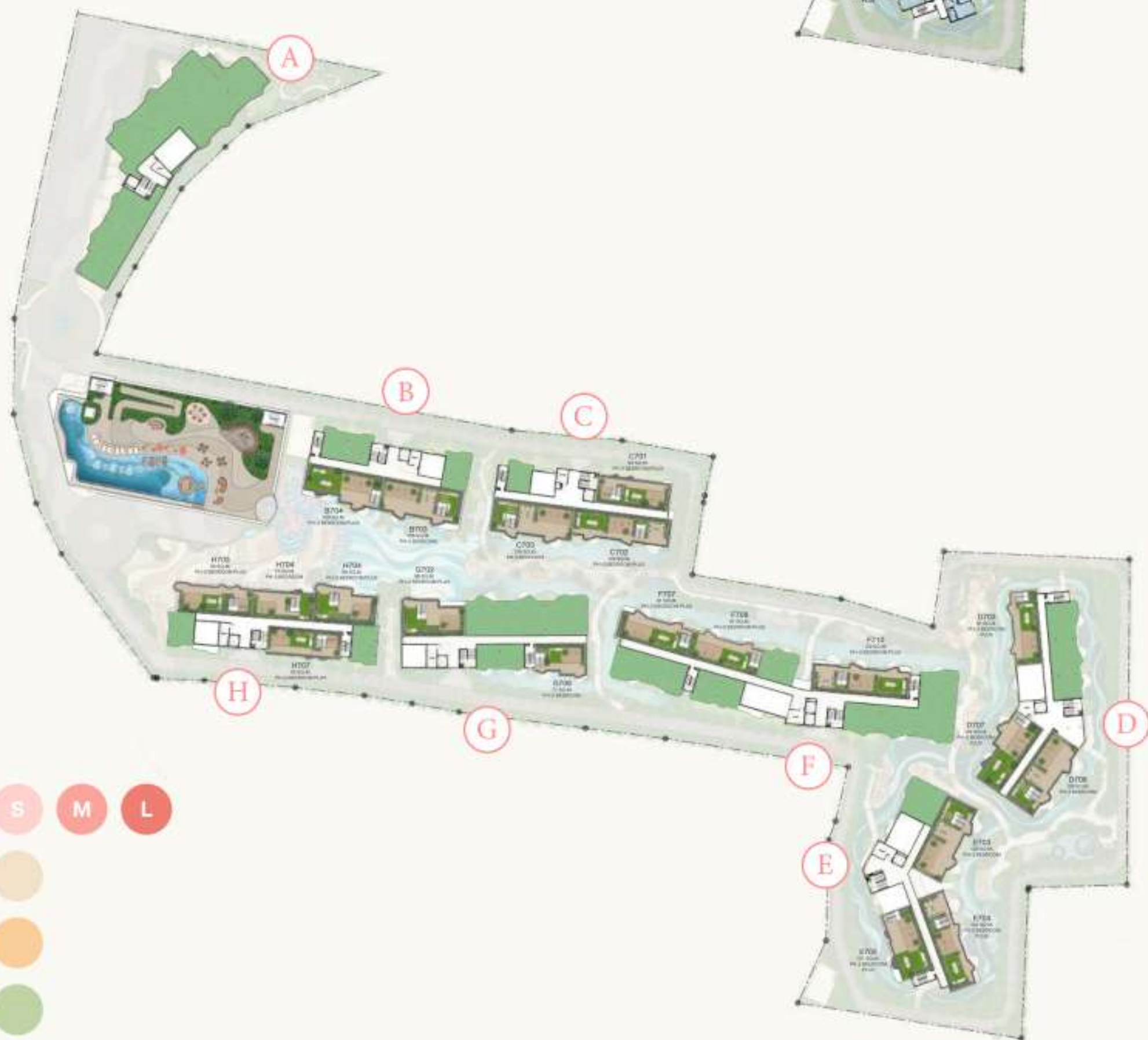
\*COMPANY RESERVES THE RIGHT TO AMEND THE TERMS AND CONDITIONS, AT ANY TIME WITHOUT PRIOR NOTICE.  
 \*THE IMAGES SHOWN ARE COMPUTER GENERATED. ANY CHANGE CAN BE APPLIED WITHOUT NOTICE. ALL RIGHTS RESERVED

# MASTER PLAN

## 7<sup>TH</sup> FLOOR PLAN



## ROOFTOP



- 1 BEDROOM
- 1 BEDROOM PLUS
- 2 BEDROOMS
- 2 BEDROOMS PLUS
- PENTHOUSE



\*COMPANY RESERVES THE RIGHT TO AMEND THE TERMS AND CONDITIONS, AT ANY TIME WITHOUT PRIOR NOTICE.  
 \*THE IMAGES SHOWN ARE COMPUTER GENERATED. ANY CHANGE CAN BE APPLIED WITHOUT NOTICE. ALL RIGHTS RESERVED

# PROJECT LAYOUT

**A**

## PET FRIENDLY\*\*

- 1<sup>st</sup> SHOP
- 2<sup>nd</sup> CO-KITCHEN / CO-WORKING / RESIDENTIAL
- 2<sup>nd</sup> - 7<sup>th</sup> RESIDENTIAL

**B**

## PET FRIENDLY\*\*



## CLUBHOUSE (FACILITIES)

- 1<sup>st</sup> GRAND LOBBY
- 3<sup>rd</sup> FITNESS / YOGA ROOM
- 5<sup>th</sup> SKY LOUNGE
- 7<sup>th</sup> STEAM & SAUNA

**H**

- 1<sup>st</sup> GAME ZONE / KID'SZONE  
LAUNDRY / VENDING MACHINE AREA
- 2<sup>nd</sup> - 7<sup>th</sup> RESIDENTIAL

## PARKING BUILDING

# COMMON AREA

Totals Approximately **8,680** sq.m.

Includes:

<b>GREEN AREA</b>	APPROXIMATELY	<b>3,000</b>	sq.m.
<b>POOL AREA</b>	APPROXIMATELY	<b>2,700</b>	sq.m.
<b>COMMON AREA IN FACILITIES</b>	APPROXIMATELY	<b>2,700</b>	sq.m.



\*COMPANY RESERVES THE RIGHT TO AMEND THE TERMS AND CONDITIONS, AT ANY TIME WITHOUT PRIOR NOTICE.  
\*THE IMAGES SHOWN ARE COMPUTER GENERATED AND CHANGE CAN BE APPLIED WITHOUT NOTICE. ALL RIGHTS RESERVED.

# FACILITIES

# 12

**OUTDOOR  
FACILITIES**

1. PET CLUB
2. KIDS POOL & WATERSCAPE
3. WATERFALL & DRY FOUNTAIN PLAZA
4. SHALLOW POOL & SUNBATHING AREA
5. CORAL ISLAND
6. 30 M. LAP POOL
7. POOL BAR
8. CO-LIVING SPACE
9. WHIRLPOOL (APPROX 250 M.)
10. ONZEN IN THE GARDEN  
(FOOT SPA & REFLEXOLOGY)
11. JACUZZI POD
12. HYDROTHERAPY

# 10

**INDOOR  
FACILITIES**

## **BUILDING A**

1. CO-WORKING SPACE
2. LIBRARY
3. CO-READING SPACE
4. PRIVATE MEETING SPACE
5. CO-KITCHEN SPACE

## **BUILDING H**

6. GAME ZONE / ARCADE
7. KID'S ZONE
8. LAUNDRY ROOM

## **CLUBHOUSE & PARKING BUILDING**

9. FITNESS/YOGA ROOM
10. STEAM & SAUNA ROOM

**CORALINA KAMALA**

**BLENDS NATURE - WELLNESS - SERVICE - SMART TECH FOR A TRULY SUSTAINABLE LIFESTYLE.**

# OUTDOOR FACILITIES

SHOPS



FACILITIES & PARKING BUILDING



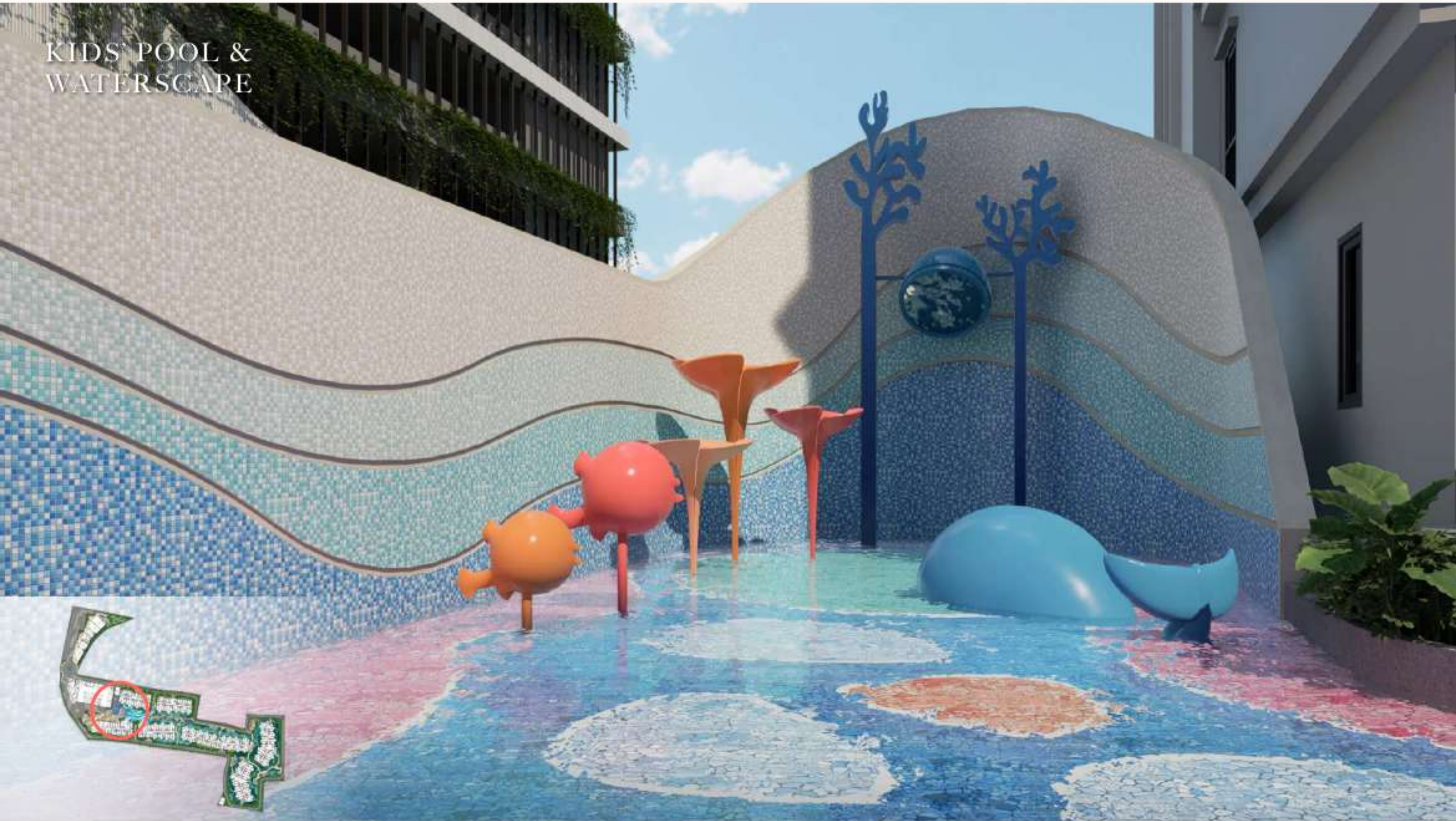
\*COMPANY RESERVES THE RIGHT TO AMEND THE TERMS AND CONDITIONS, AT ANY TIME WITHOUT PRIOR NOTICE.  
\*THE IMAGES SHOWN ARE COMPUTER GENERATED. ANY CHANGE CAN BE APPLIED WITHOUT NOTICE. ALL RIGHTS RESERVED

# OUTDOOR FACILITIES



# OUTDOOR FACILITIES

KIDS' POOL & WATERSCAPE



CORAL ISLAND



# OUTDOOR FACILITIES

POOL BAR



CO-LIVING SPACE  
(CORAL REEF PAVILLION)



# OUTDOOR FACILITIES

CORALSCAPE IN THE GARDEN



FOOT SPA & ONZEN IN THE GARDEN



# OUTDOOR FACILITIES

SKY POOL &  
SKY PAVILION



SKY POOL



# INDOOR FACILITIES

CO-KITCHEN  
BUILDING A 2<sup>nd</sup> Floor



CO-WORKING SPACE  
BUILDING A 2<sup>nd</sup> Floor



# INDOOR FACILITIES

GRAND LOBBY  
PARKING BUILDING 1<sup>st</sup> Floor



FITNESS  
PARKING BUILDING 3<sup>rd</sup> Floor



# INDOOR FACILITIES

LOUNGE  
PARKING BUILDING 5<sup>th</sup> Floor



SAUNA & STEAM ROOM (F)  
PARKING BUILDING 7<sup>th</sup> Floor



# INDOOR FACILITIES

SAUNA & STEAM ROOM (M.)  
PARKING BUILDING 7<sup>th</sup> Floor



SEMI OUTDOOR LOBBY  
BUILDING H 1<sup>st</sup> Floor



# INDOOR FACILITIES

KIDS' ROOM  
BUILDING H 1<sup>st</sup> Floor



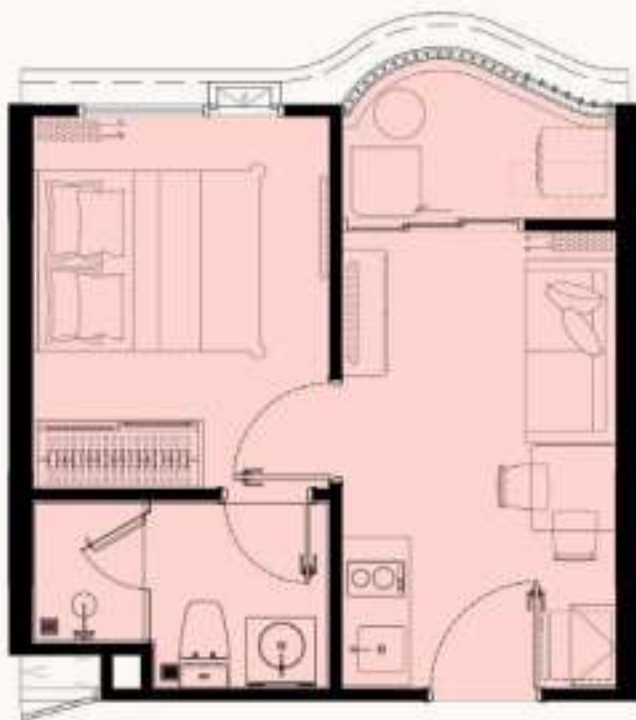
GAMES ROOM  
BUILDING H 1<sup>st</sup> Floor



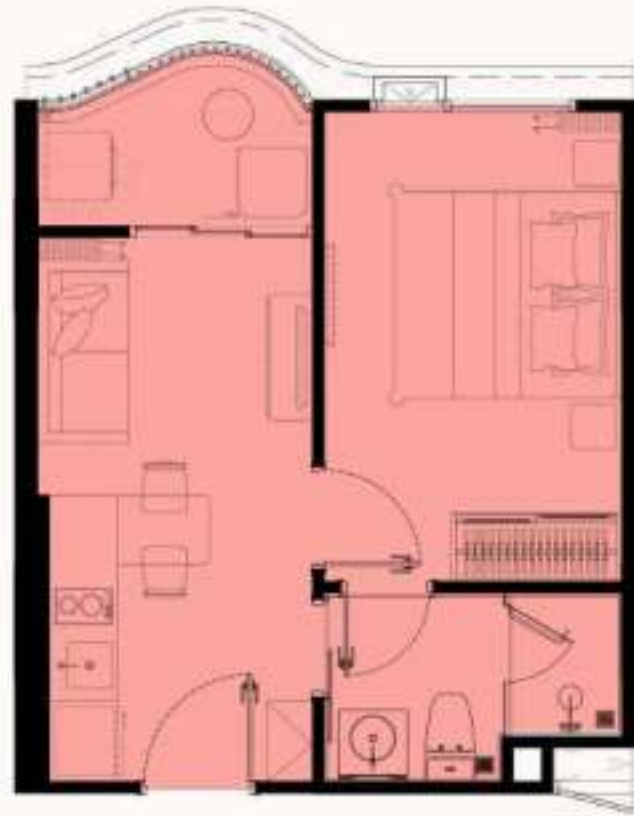
# UNIT PLAN

## 1 BEDROOM

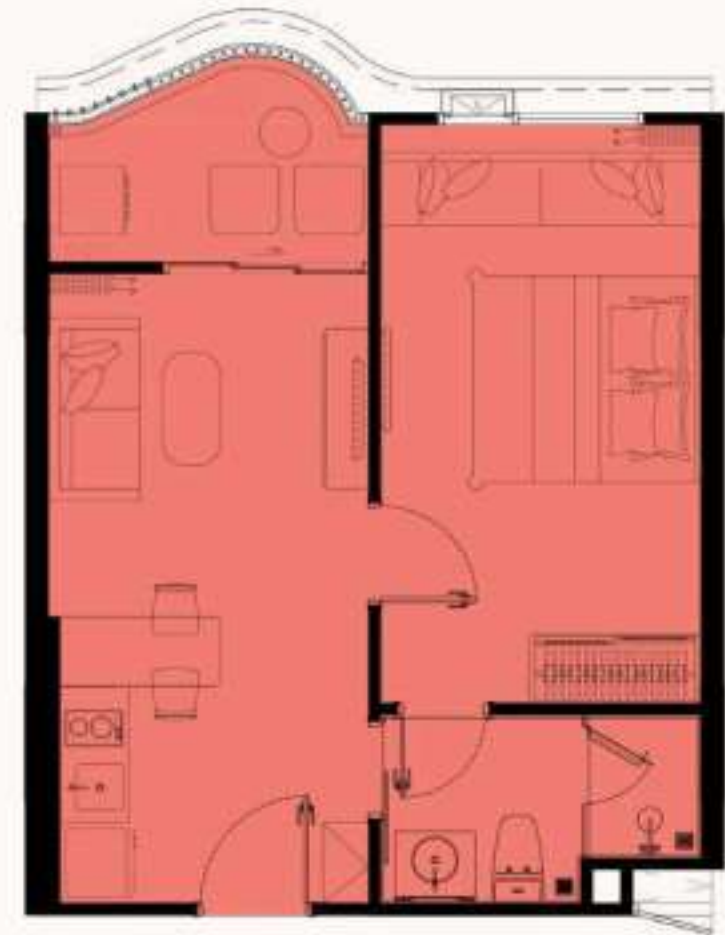
(26 - 44 sq.m.)



(S)



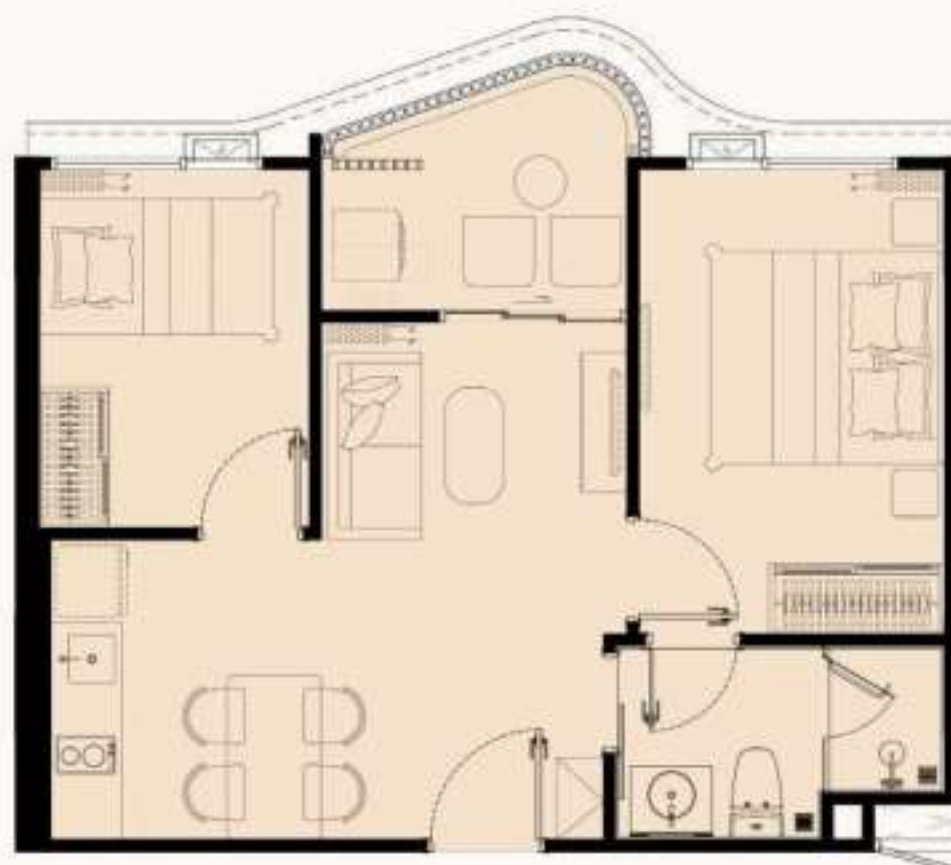
(M)



(L)

## 1 BEDROOM PLUS

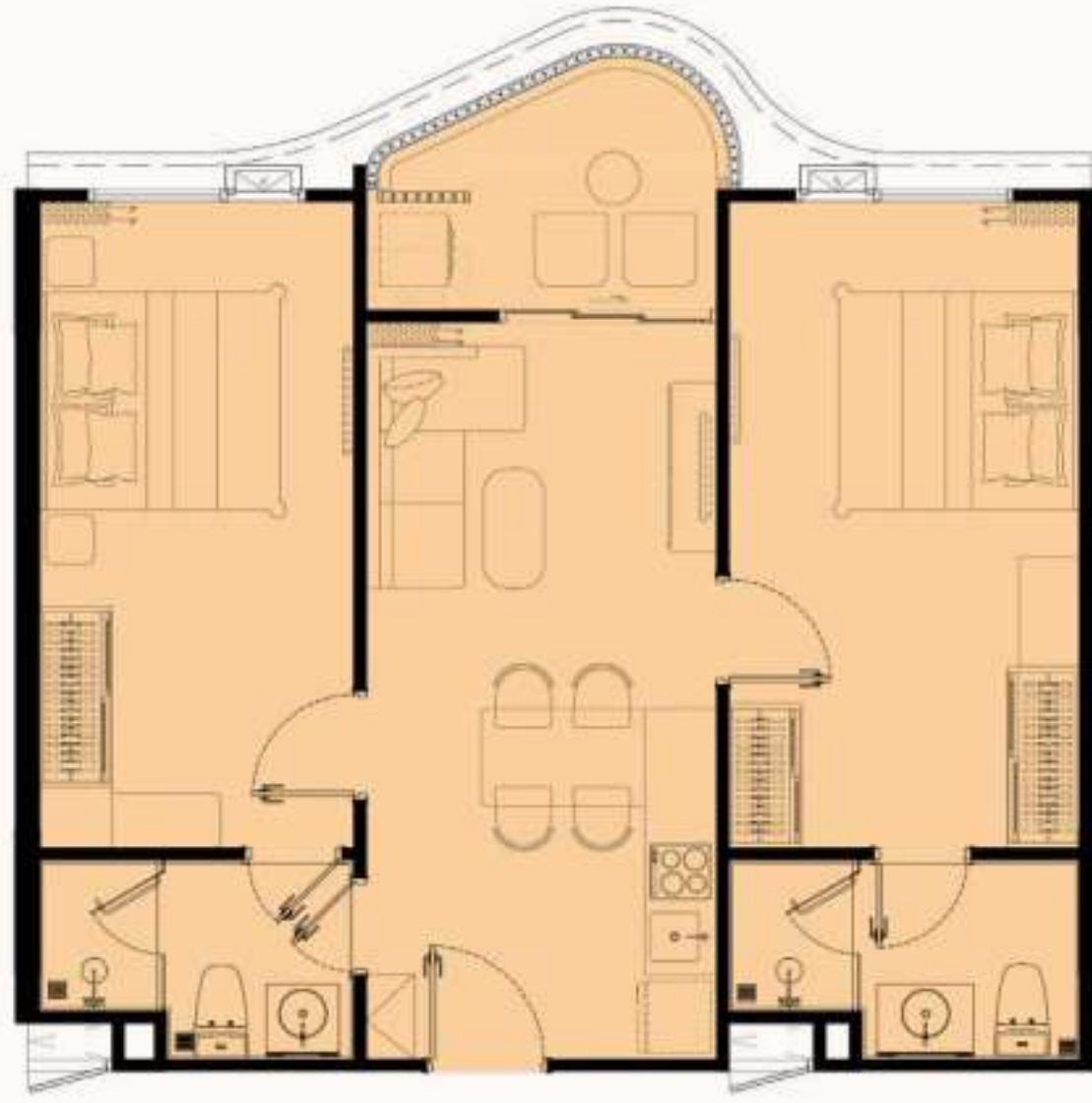
(46 - 49 sq.m.)



# UNIT PLAN

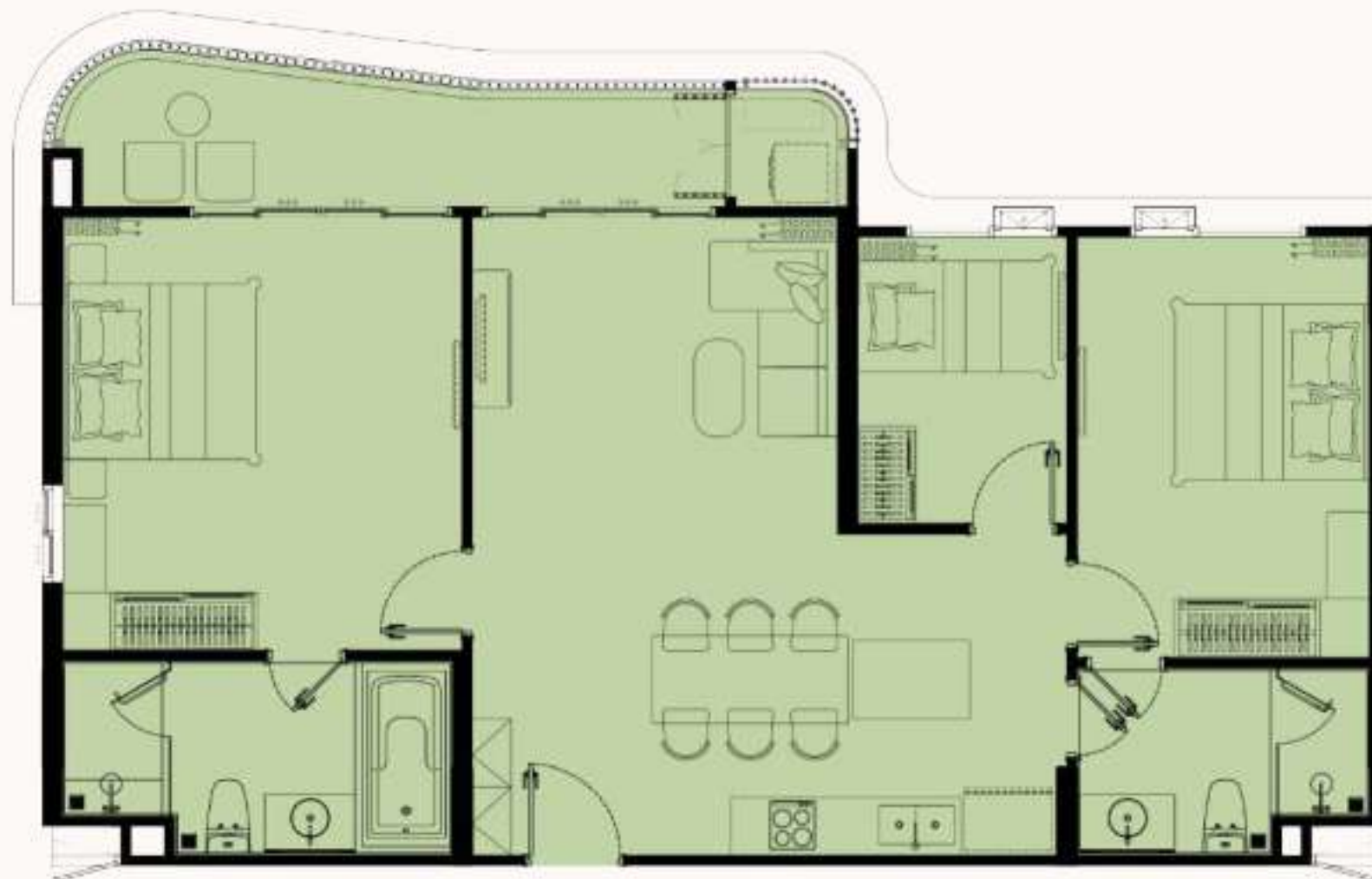
## 2 BEDROOM

(64 - 68 sq.m.)



## 2 BEDROOM PLUS

(98 - 107 sq.m.)



# UNIT PLAN

## 2 BEDROOM PENTHOUSE

(71 - 72 sq.m.)



## 2 BEDROOM PLUS PENTHOUSE

(91 - 122 sq.m.)



## 3 BEDROOM PENTHOUSE

(128 sq.m.)

